

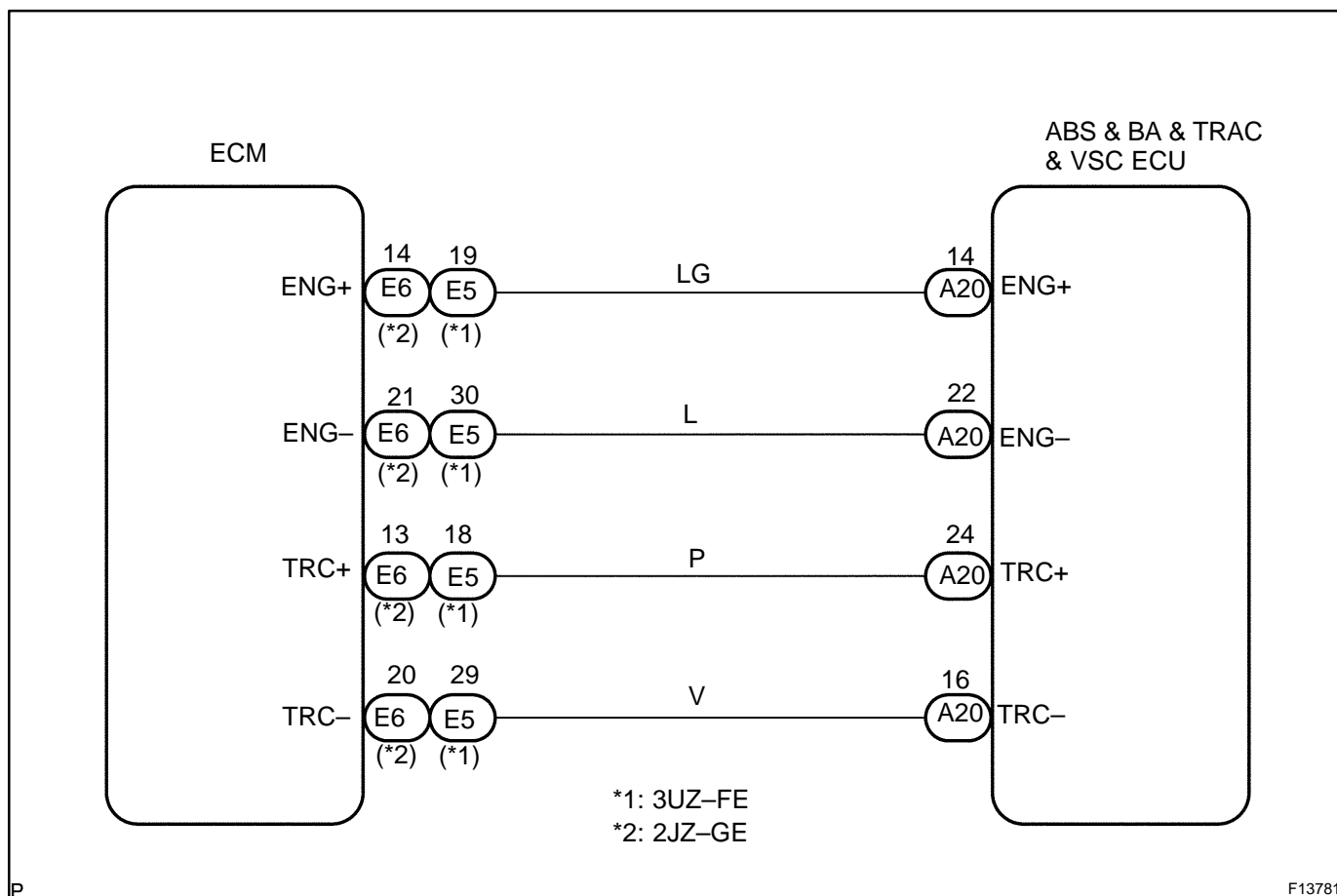
<b>DTC</b>	<b>C1203 / 53</b>	<b>ECM Communication Circuit Malfunction</b>
------------	-------------------	--

## CIRCUIT DESCRIPTION

The circuit is used to send TRAC & VSC control information from the ABS & BA & TRAC & VSC ECU to the ECM (TRC+, TRC–), and engine control information from the ECM to the ABS & BA & TRAC & VSC ECU (ENG+, ENG–).

DTC No.	DTC Detecting Condition	Trouble Area
C1203/53	Either of the following 1. or 2. continues for 5 sec.: 1. ECU IG1 terminal voltage is 9.5 V to 17.0 V and data transmission to the ECM is impossible. 2. ECU IG1 terminal voltage is 9.5 V to 17.0 V, engine speed is 500rpm or more or vehicle speed is 60 km/h (36 mph) or more and data receiving from the ECM is impossible.	<ul style="list-style-type: none"> <li>• TRC+ or TRC– circuit</li> <li>• ENG+ or ENG– circuit</li> <li>• ECM</li> </ul>

## WIRING DIAGRAM



## INSPECTION PROCEDURE

1	Check for open and short circuit in harness and connector between each of terminals ENG+, ENG–, TRC+, TRC– of ABS & BA & TRAC & VSC ECU and ECM (See page <a href="#">IN-32</a> ).
---	--

NG

Repair or replace harness or connector.

OK

Check and replace ECM or ABS & BA & TRAC & VSC ECU